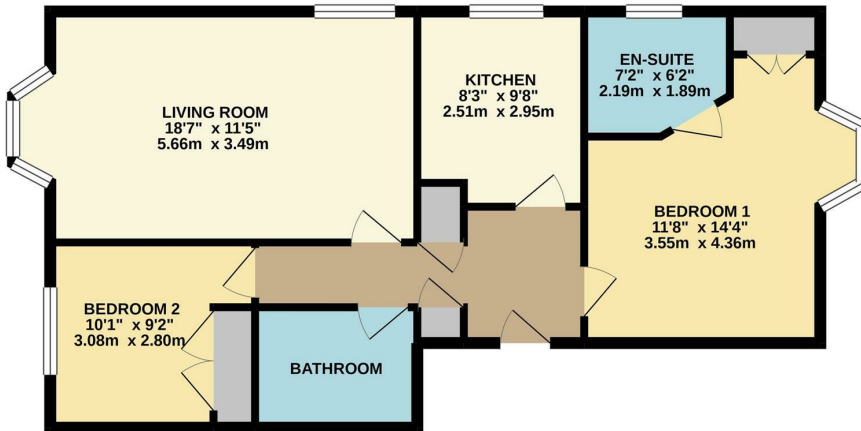


19 Birch End, Warwick

Offers over £180,000

charlesrose.

SECOND FLOOR
717 sq.ft. (66.6 sq.m.) approx.



TOTAL FLOOR AREA: 717 sq.ft. (66.6 sq.m.) approx.
Whilst every attempt has been made to ensure the accuracy of the floorplan contained here, measurements of doors, windows, rooms and any other items are approximate and no responsibility is taken for any error, omission or mis-statement. This plan is for illustrative purposes only and should be used as such by any prospective purchaser. The services, systems and appliances shown have not been tested and no guarantee as to their operability or efficiency can be given.
Made with Metriplex ©2021



A very well presented second floor apartment in the sought after Birch End gated development. Sold with no onward chain the property comprises entrance hall, kitchen, living room, two double bedrooms one with ensuite and bathroom. It also benefits from a partially boarded loft space. Outside is an allocated parking space and well managed grounds.

It is worth noting that the lease has 168 years remaining and no ground rent.

Situated between Warwick and Leamington town centres and only 0.9 miles to Warwick Train Station, this is an ideal property for both first time buyers, investors and for those where security is essential, therefore interest is expected to be high. To avoid disappointment call us today to arrange your own viewing.

charlesrose.

- 01926 832411
- info@charlesroseproperties.co.uk
- www.charlesroseproperties.co.uk

